

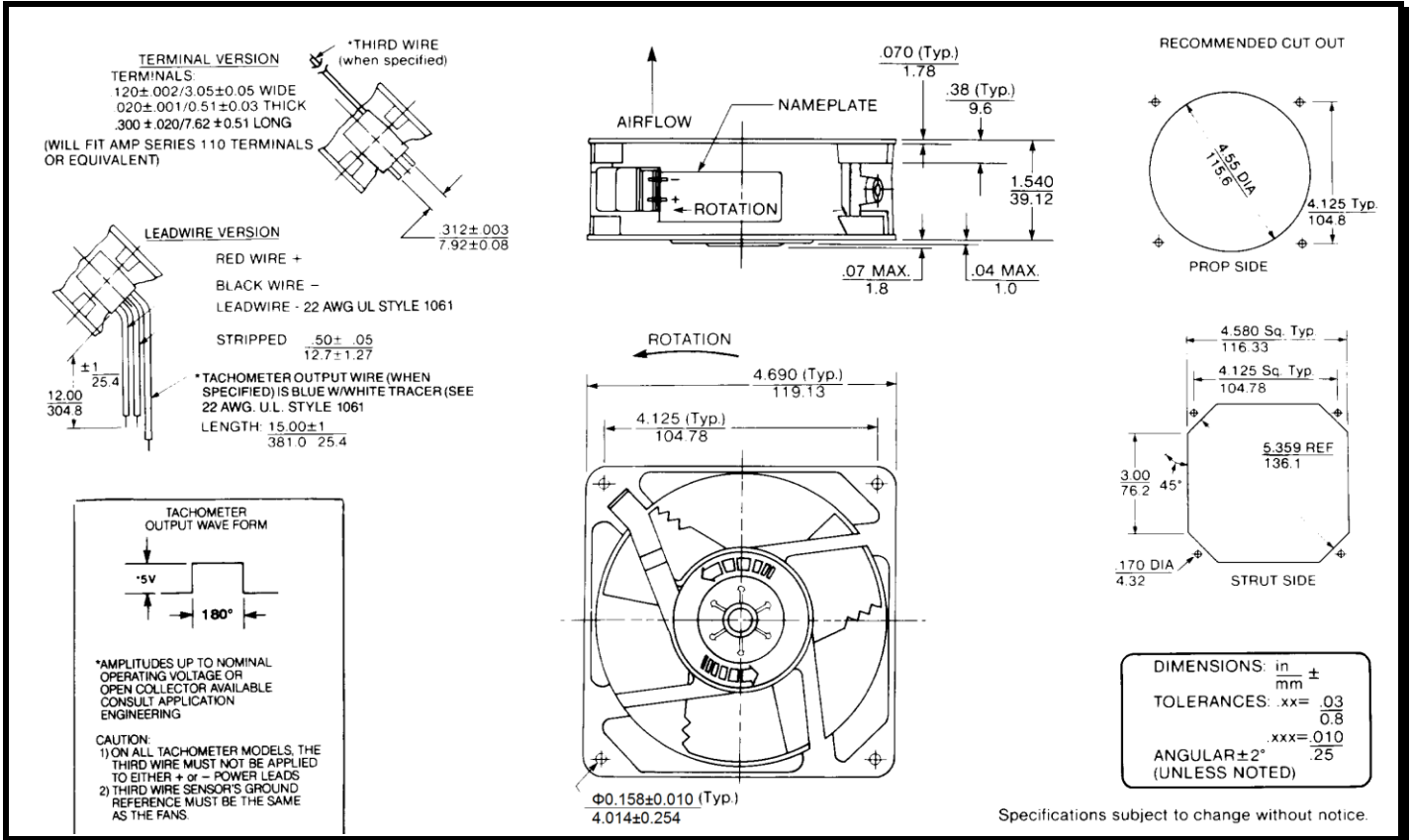
SPECIFICATIONS

Model Number: MD24B5-E2
Part Number: 19039030A

Version: 02
Nov 119, 2019



Mechanical Drawing:



Motor:

Nominal Voltage = 24 vdc
 Operating Voltage Range = 12 - 28 vdc
 Running Current = 0.250 amps
 Locked Rotor Current = 0.750 amps
 Running Power = 6.0 watts
 Average Speed = 3100 rpm
 Bearings = Ball
 Air Flow = 106 CFM
 Acoustic = 50.0 dBA

Construction:

Venturi: Die-Cast Aluminum, Black
 Propeller: Plastic, Black, UL 94V-0

Life Expectancy:

This fan is designed for continuous duty life of 55,000 hours at 70°C.

Agency Approved:

UL, CUL, CE

Additional Features:

Brushless DC Motor
 Electronic Locked Rotor Protected
 Polarity Protected
 Automatic Restart Capability
 Operating Temperature: -10°C to 70°C
 Storage Temperature: -40°C to 85°C
 Environmental Type II coating

Tachometer:

Output: 5 volt TTL
 Isolated: No
 Pulses per Rev.: 1

Termination:

12" Lead wires, 22AWG, UL 1061
 Red - Fan Power, (+)
 Black - Fan Ground, (-)
 Blue/White - Tachometer, (Output)

PQ Curve:

